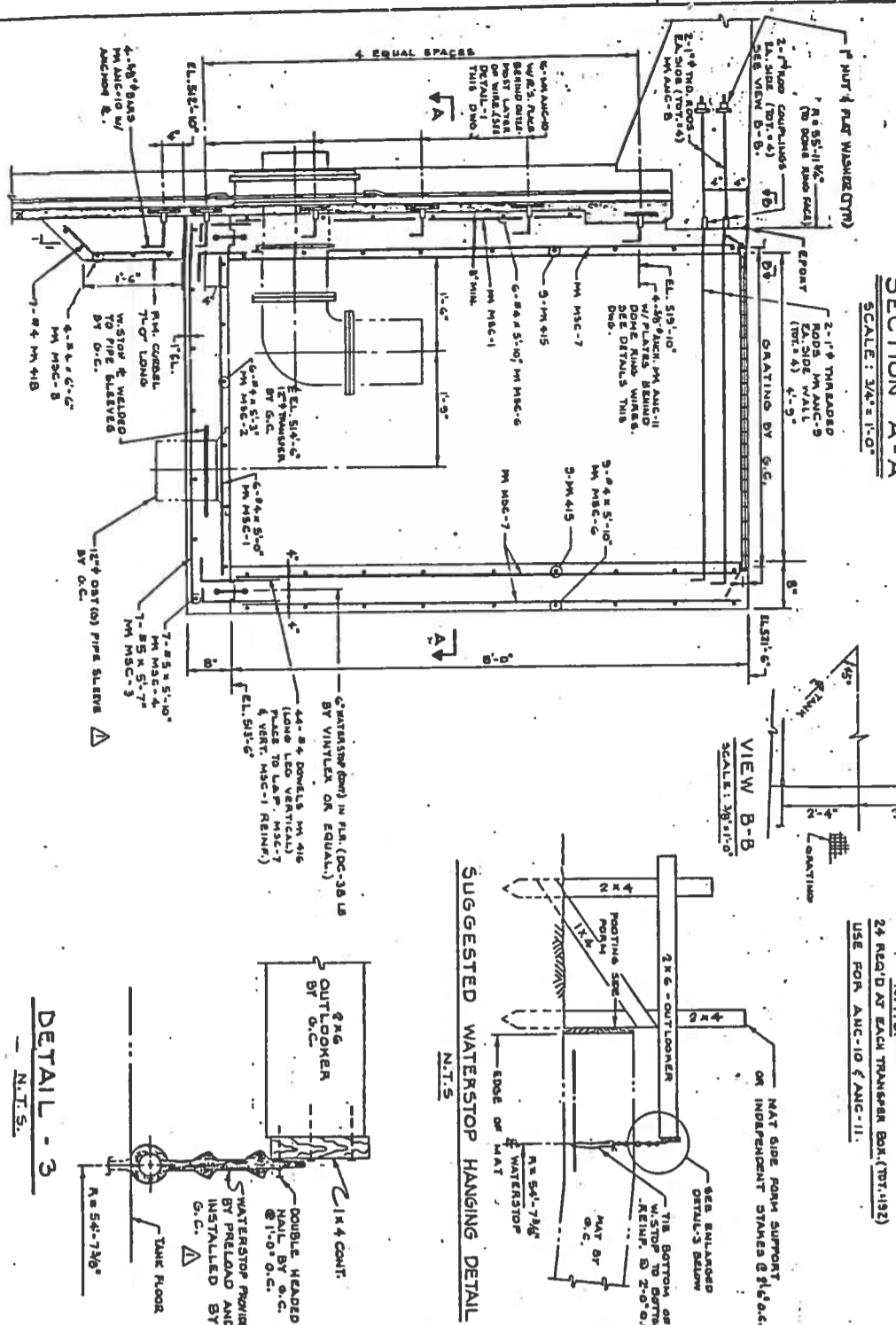
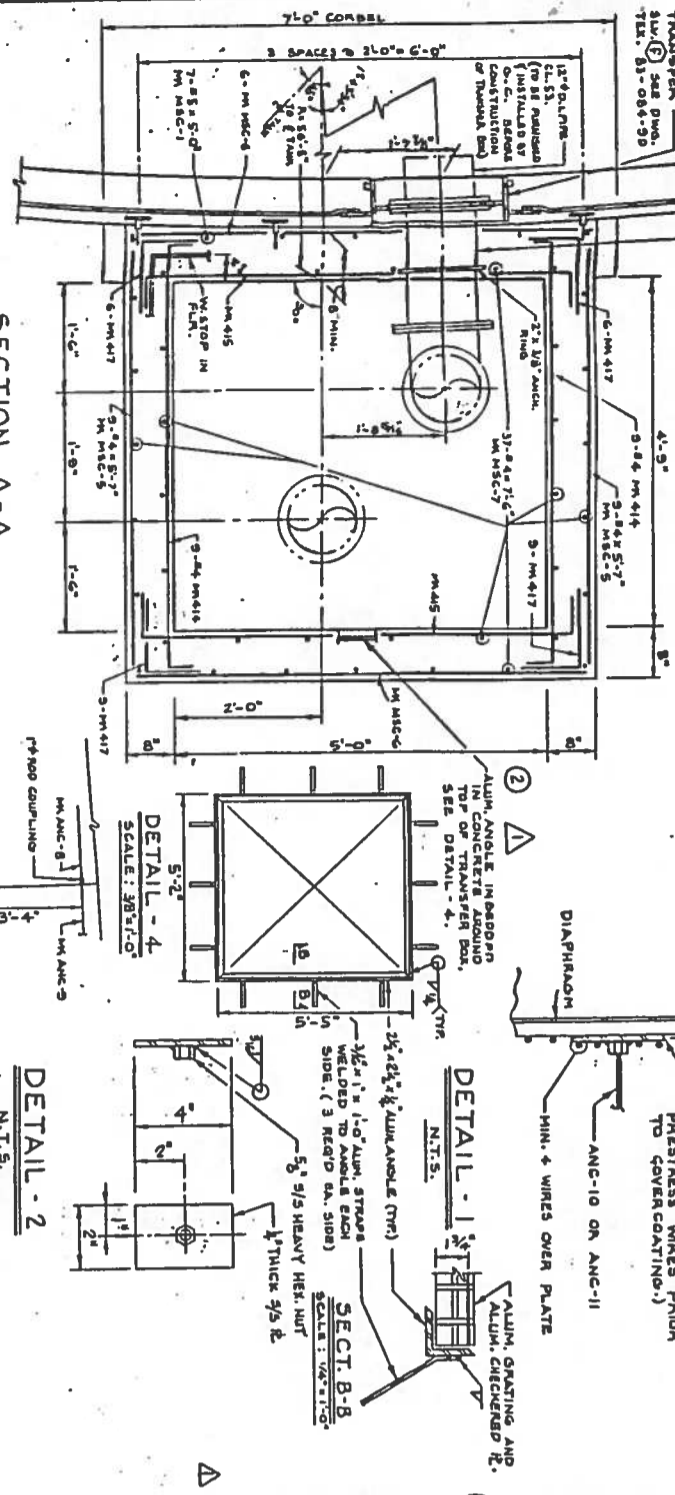


USE 3/4" DIA. PIPE, FL-1, 50-59, 1'-6 1/2" DIA. BY G.C. TO BE SUPPLIED & INSTALLED BY G.C. BEFORE TRANSFER BOX IS CONSTRUCTED.



(TOTAL 8 READ FOR DIGESTER TANKS, TANKS NO. 2, 3, 4, 5 & 6 OPPOSITE HAND.)
FOR PH. ANC-8, 9, 10 & 11 SEE "MISC. IRON SCHED." THIS SHEET.

MISC. IRON SCHEDULE (FOR 9 TANKS)

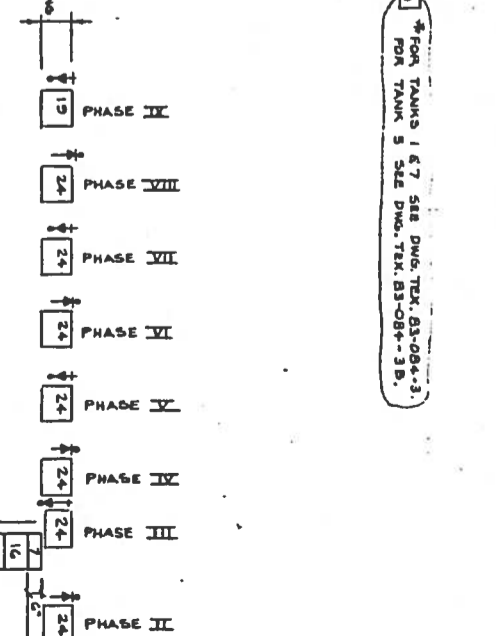
PHASE	WALL	WELDS WEIGHT	DOVE RING	WELDS WEIGHT	TOTAL WEIGHT	TOTAL REMARKS	LOCATION
I	123	3086	24	632	3718	WELDS AT TOP OF MACHINE	TRANSFER BOX
II	123	3086	24	632	3718	WELDS AT BOTTOM OF MACHINE	TRANSFER BOX
III	123	3086	24	632	3718	WELDS AT TOP OF MACHINE	TRANSFER BOX
IV	123	3086	24	632	3718	WELDS AT BOTTOM OF MACHINE	TRANSFER BOX
V	123	3086	24	632	3718	WELDS AT TOP OF MACHINE	TRANSFER BOX
VI	123	3086	24	632	3718	WELDS AT BOTTOM OF MACHINE	TRANSFER BOX
VII	123	3086	24	632	3718	WELDS AT TOP OF MACHINE	TRANSFER BOX
VIII	123	3086	24	632	3718	WELDS AT BOTTOM OF MACHINE	TRANSFER BOX
IX	123	3086	24	632	3718	WELDS AT TOP OF MACHINE	TRANSFER BOX
X	123	3086	24	632	3718	WELDS AT BOTTOM OF MACHINE	TRANSFER BOX
XI	123	3086	24	632	3718	WELDS AT TOP OF MACHINE	TRANSFER BOX
XII	123	3086	24	632	3718	WELDS AT BOTTOM OF MACHINE	TRANSFER BOX
XIII	123	3086	24	632	3718	WELDS AT TOP OF MACHINE	TRANSFER BOX
XIV	123	3086	24	632	3718	WELDS AT BOTTOM OF MACHINE	TRANSFER BOX
XV	123	3086	24	632	3718	WELDS AT TOP OF MACHINE	TRANSFER BOX
XVI	123	3086	24	632	3718	WELDS AT BOTTOM OF MACHINE	TRANSFER BOX
XVII	123	3086	24	632	3718	WELDS AT TOP OF MACHINE	TRANSFER BOX
XVIII	123	3086	24	632	3718	WELDS AT BOTTOM OF MACHINE	TRANSFER BOX
TOTAL	1348	33816	187	4924	38740		

PRESTRESS WIRE QUANTITIES

PHASE	WELDS WEIGHT	DOVE RING	WELDS WEIGHT	TOTAL WEIGHT	TOTAL REMARKS
I	123	3086	24	632	WELDS AT TOP OF MACHINE
II	123	3086	24	632	WELDS AT BOTTOM OF MACHINE
III	123	3086	24	632	WELDS AT TOP OF MACHINE
IV	123	3086	24	632	WELDS AT BOTTOM OF MACHINE
V	123	3086	24	632	WELDS AT TOP OF MACHINE
VI	123	3086	24	632	WELDS AT BOTTOM OF MACHINE
VII	123	3086	24	632	WELDS AT TOP OF MACHINE
VIII	123	3086	24	632	WELDS AT BOTTOM OF MACHINE
IX	123	3086	24	632	WELDS AT TOP OF MACHINE
X	123	3086	24	632	WELDS AT BOTTOM OF MACHINE
XI	123	3086	24	632	WELDS AT TOP OF MACHINE
XII	123	3086	24	632	WELDS AT BOTTOM OF MACHINE
XIII	123	3086	24	632	WELDS AT TOP OF MACHINE
XIV	123	3086	24	632	WELDS AT BOTTOM OF MACHINE
XV	123	3086	24	632	WELDS AT TOP OF MACHINE
XVI	123	3086	24	632	WELDS AT BOTTOM OF MACHINE
XVII	123	3086	24	632	WELDS AT TOP OF MACHINE
XVIII	123	3086	24	632	WELDS AT BOTTOM OF MACHINE
TOTAL	1348	33816	187	4924	

TOTAL OVERALL HEIGHT OF PRESTRESS PHASES = 120'
PRESTRESS WIRE QUANTITIES LISTED ARE FOR ONE DIGESTER TANK ONLY. FOR PRESTRESS REQUIREMENTS OF SLUDGE STORAGE TANK SEE DWG. TEX. 83-084-15.5.

LEGEND
STOP AND GOAT WIRE
DIRECTION OF APPLICATION
DIE ON TOP OF MACHINE
DIE ON BOTTOM OF MACHINE
* - WIRES ANCHORED TO STRESS R.



DIGESTER TANKS WIREWINDING SCHEDULE

- NOTES:**
1. WIREWINDING SCHEDULE IS BASED ON A WIRE DIAMETER OF 0.166" FOR WALL, 0.166" FOR DOME RING, SIZES AND NUMBERS MAY BE ALTERED AS NECESSARY TO ATTAIN PROPER TOTAL WIT FORCE.
 2. INITIAL FORCE IN WIRE (BASED ON SIZES INDICATED):
WALL RING - 31,500 LBS.
DOME RING - 28,500 LBS.
 3. INITIAL UNIT STRESS IN WIRE NOT TO EXCEED 150,000 PSI. FOR WALL, 155,000 RLL FOR DOME RING.
 4. PROVIDE ONE INCH PNEUMATIC MORTAR PROTECTIVE COVER OVER OUTERMOST LAYER OF WIRE.
 5. WIREWINDING SEQUENCE SHOWN SHOULD NOT BE ALTERED WITHOUT PRIOR APPROVAL BY PRELOADED ENGINEERS.
 6. WIREWINDING MAY COMMENCE AFTER DOME CONCRETE HAS ATTAINED A STRONG POINT OF 3000 PSI.

PRELOAD

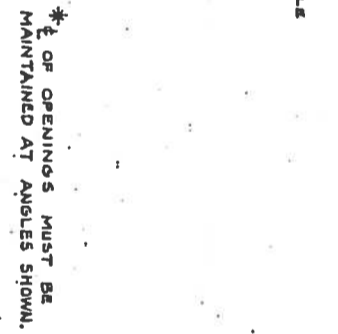
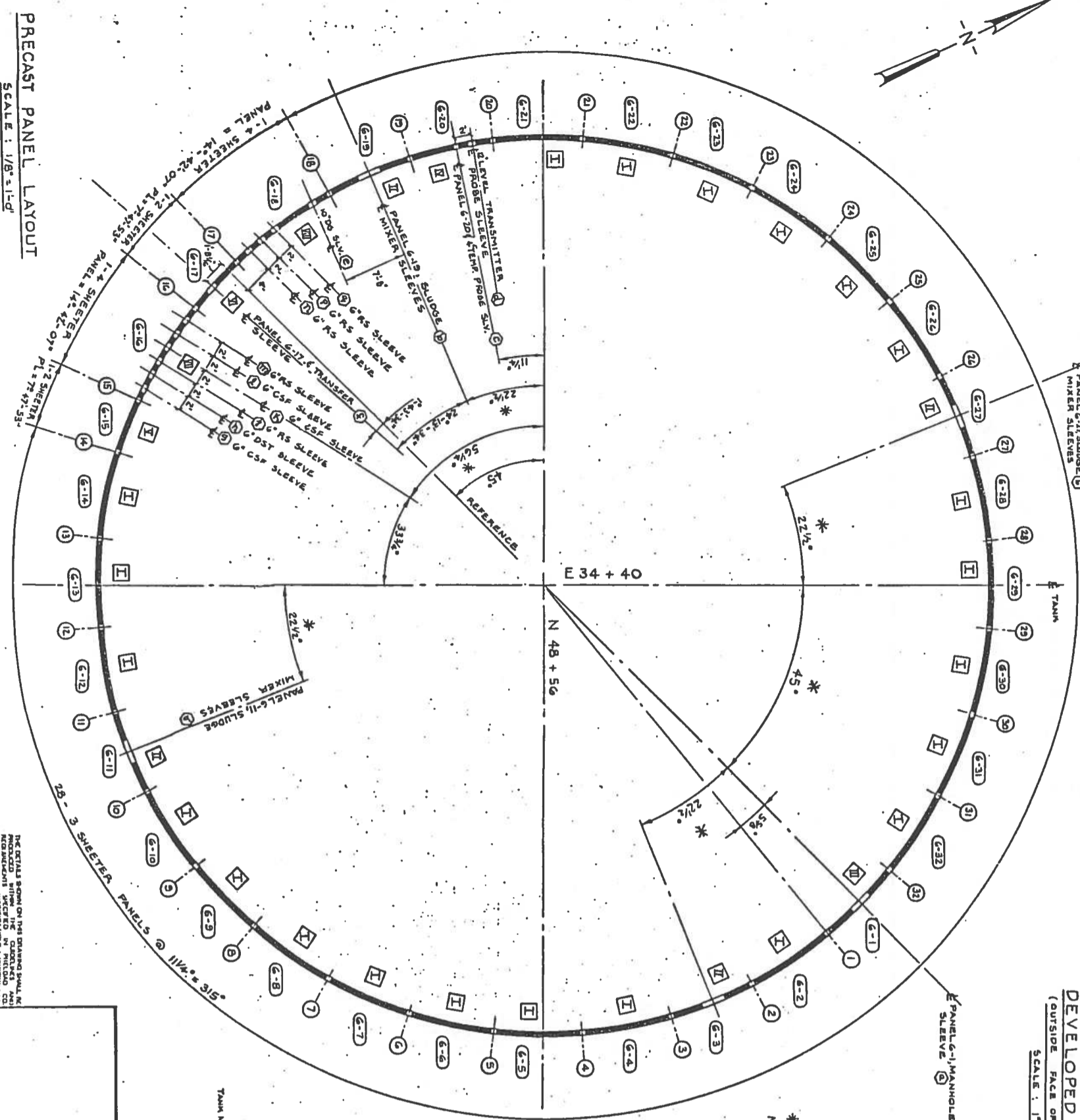
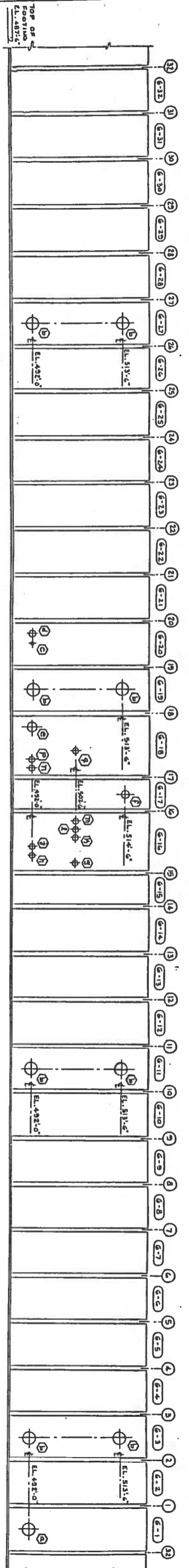
WORKING DRAWING

NO.	DATE	DESCRIPTION	BY	CHKD
1	7-24-83	AS PER ENGINEER'S	JD	RAO
2	7/26/83	AS PER ENGINEER'S NOTATIONS	JD	RAO
3	7/26/83	MISC. IRON SCHEDULE, WIREWINDING SCHEDULE, PRELOAD, WELDS DUE TO DISCREPANCY W/STOP IN R.L. 3.6	JD	RAO

DESIGNED BY: JD
CHECKED BY: RAO
DATE: 5/24/85

PROJECT: DOS RIOS FACILITY
SAN ANTONIO, TEXAS
DIGESTER TANKS # 2, 4, 5, 6 & 8 WIREWINDING SC
TRANSFER BOX DETAILS & MISC. IRON SC

THE DETAILS SHOWN ON THIS DRAWING SHALL BE MODIFIED WITHIN THE DETAILED AND COMMENTED BY THE DESIGNER AND APPROVED BY THE ENGINEER AND APPROVED BY THE CONTRACTOR.



PANEL TYPES & QTY.

TYPE I - 22
TYPE II - 4
TYPE III - 1
TYPE IV - 1
TYPE V - 1
TYPE VI - 1
TYPE VII - 1
TYPE VIII - 1
TYPE IX - 1
TYPE X - 1
TYPE XI - 1
TYPE XII - 1
TYPE XIII - 1

JOINT WIDTH (O.FACE)
 ALL JOINTS (EXCEPT AS NOTED) 7/16"
 JOINTS (5) & (6) : 7/16"
 JOINTS (16) (17) & (18) : 7/8"

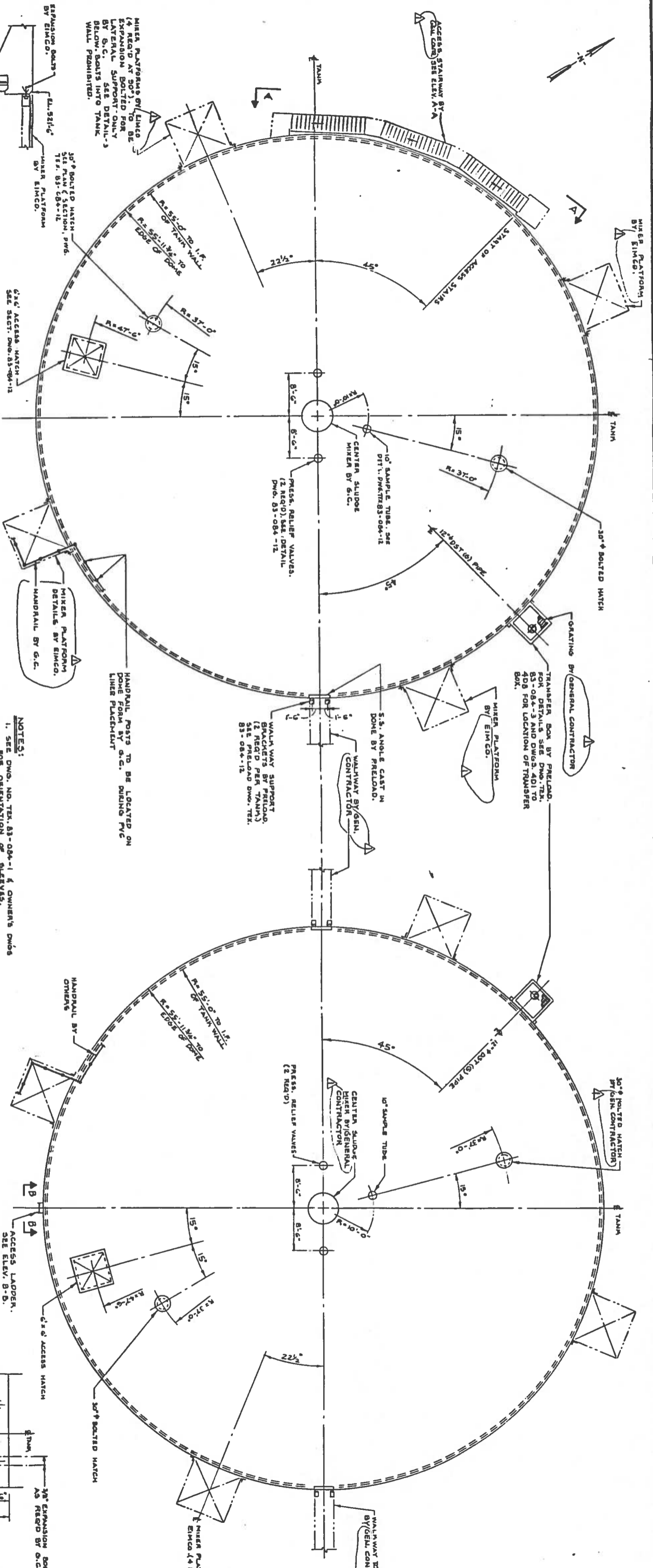
LEGEND
 (I) = JOINT NUMBERS
 (G-1) = PANEL NUMBERS
 (P) = PANEL SLEEVE TYPE

REVISIONS

NO.	DATE	DESCRIPTION	BY	CHK

PRELOAD
 PRELOAD TECHNOLOGY, INC.
 438 STEWART AVENUE, GARDEN CITY, NEW YORK, 11530

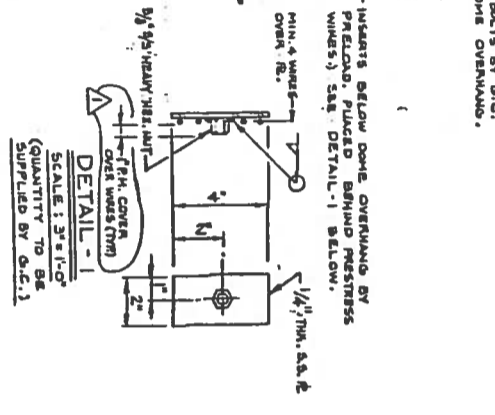
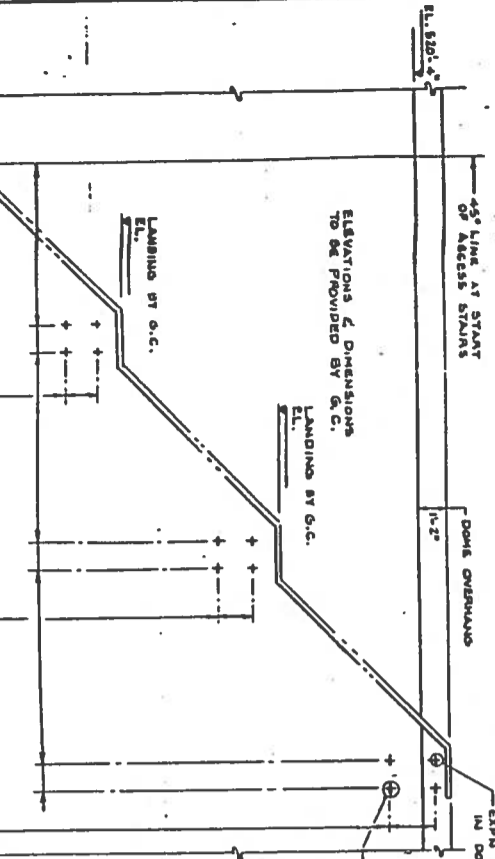
WORKING DRAWING
 DOS RIOS FACILITY
 SAN ANTONIO, TEXAS
 PRIMARY DIGESTER TAN
 TANK NO. 6 PANEL LAYOUT
 DRAWN: J.D. REYNOLDS
 CHECKED: R.A.G. ARREAGA
 DATE: 5/24/85



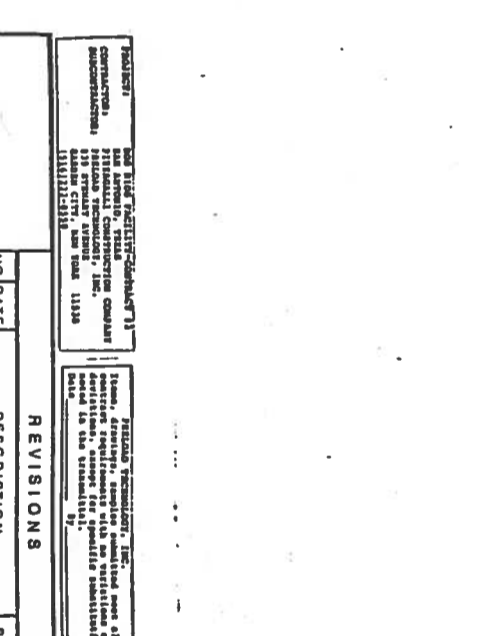
ROOF PLAN
SCALE: 1" = 10'
TANK NO. 7 SHOWN. TANKS NO. 1, 2 & 8 SIMILAR.
(SEE DWG. TEX. 83-084-1)

- NOTES:**
1. SEE DWG. NO. TEX. 83-084-1 & OWNER'S DWG. 83-084-3 FOR ORIENTATION OF SLEEVES.
 2. LOCATION OF VERIFIED SLEEVES IN EACH TANK ROOF CONCRETE.
 3. ALL DOME PENETRATIONS FOR ALL TANKS BY G.C.

ROOF PLAN
SCALE: 1" = 10'
TANK NO. 5 SHOWN. TANKS NO. 3, 4 & 6 SIMILAR.



DETAIL - 1
SCALE: 3" = 1'-0"
QUANTITY TO BE SUPPLIED BY G.C.



ELEVATION B-B (N.T.S.)
LADDER SUPPORT DETAILS
WORKING DRAWING

REVISIONS

NO	DATE	DESCRIPTION	BY	CND
1	7-2-85	AS PER ENGINEER	JD	RAO

PRELOAD

430 STEWART AVENUE, GARDEN CITY, NEW YORK, 11530

ROOF PLANS AND STAIR DETAIL

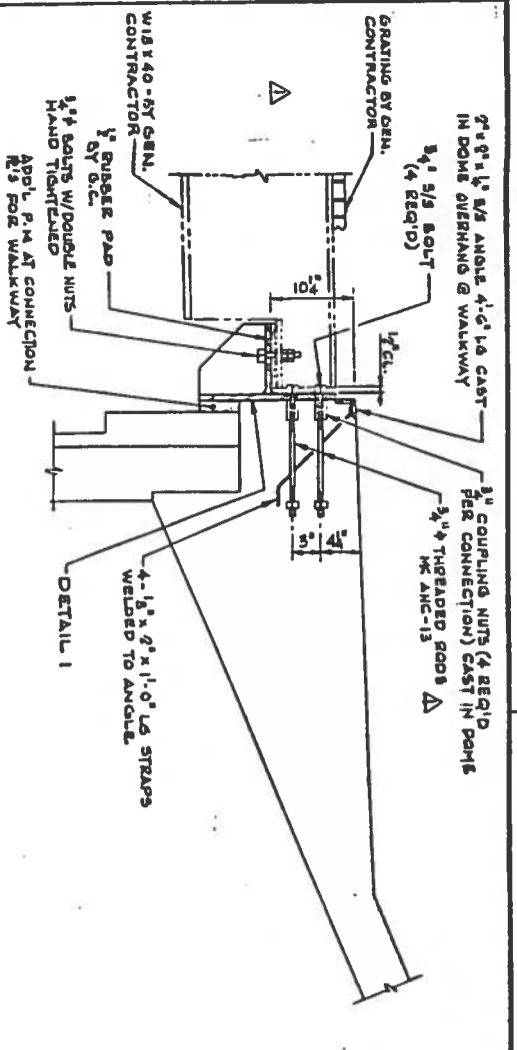
DOS RIOS FACILITY
SAN ANTONIO, TEXAS
PRIMARY DIGESTERS

DESIGNED BY: JD
CHECKED BY: RAO
DATE: 5/24/85

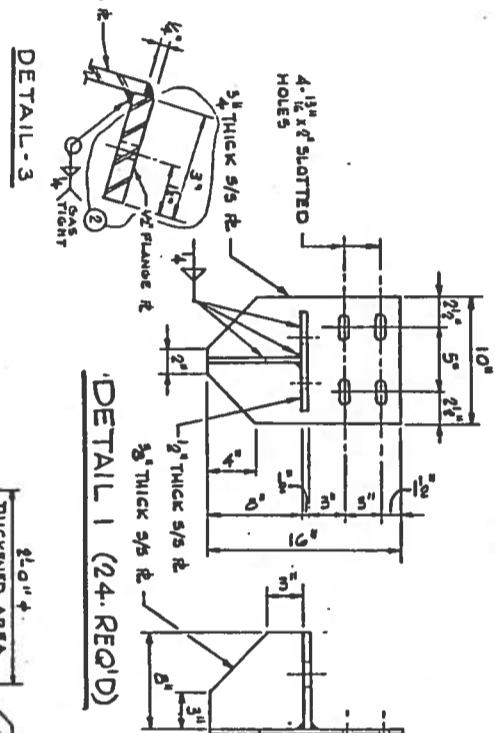
NOTES:

1. STAIRWAY REQ'D AT TANK NO. 1, 2, 7 & 8.
2. ALL BY G.C.
3. LOCATION OF INSERTS TO BE FURNISHED BY G.C.

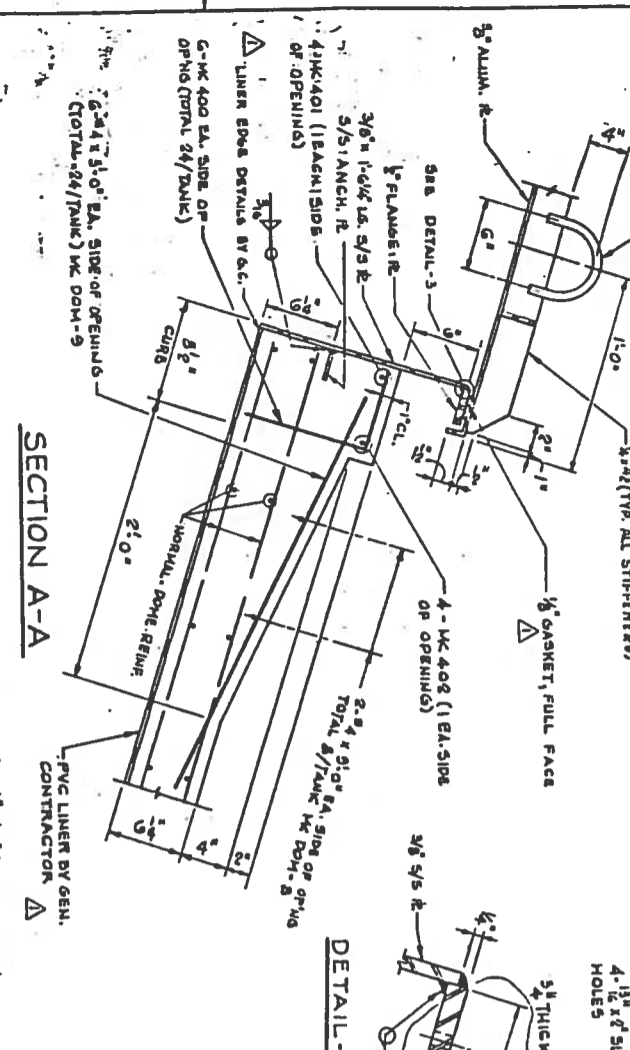
THE DETAILS SHOWN ON THE DRAWING SHALL BE CONSIDERED TO BE THE BASIS FOR THE CONTRACTOR'S OBLIGATION TO PROVIDE ALL MATERIALS AND LABOR NECESSARY FOR THE PROPER CONSTRUCTION OF THE FACILITY AND TO MAINTAIN THE FACILITY IN ACCORDANCE WITH THE SPECIFICATIONS AND REQUIREMENTS OF THE CONTRACT.



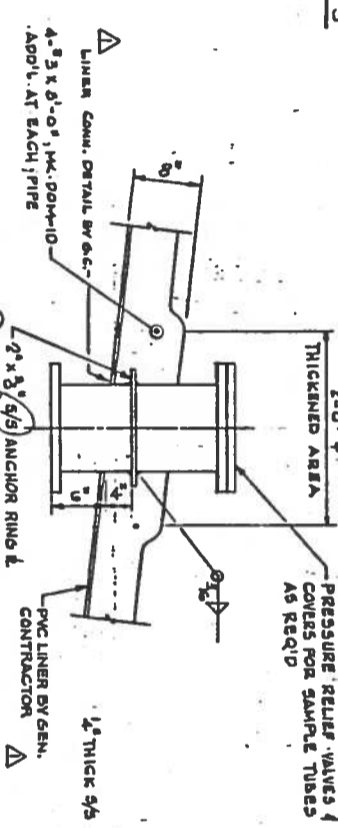
TANK-WALKWAY CONNECTION DETAIL
(FOR DICESTER TANKS ONLY)



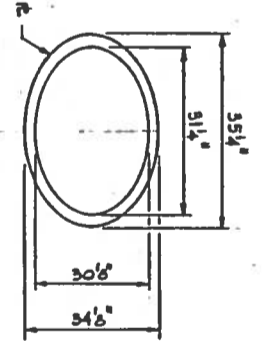
DETAIL 1 (24 REQ'D)



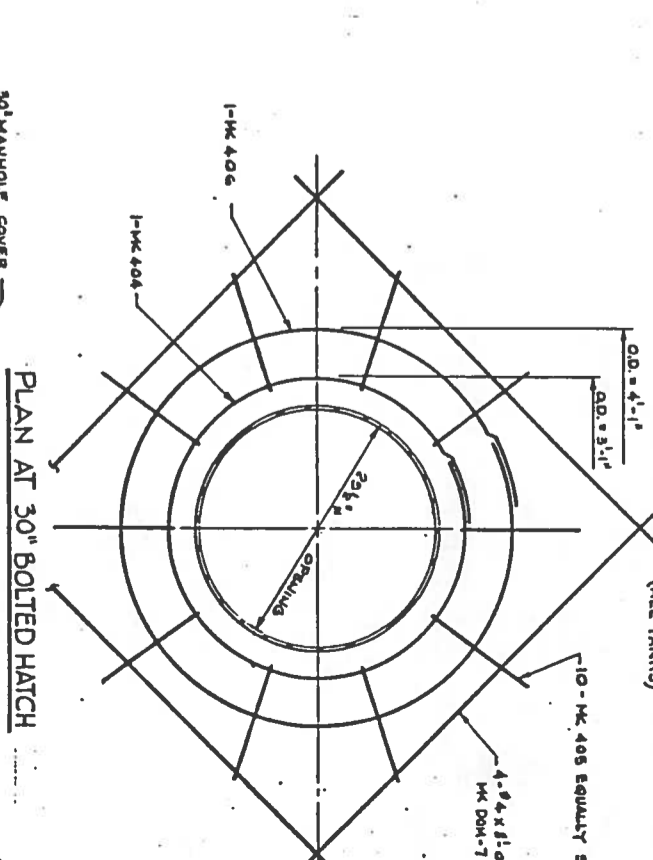
SECTION A-A



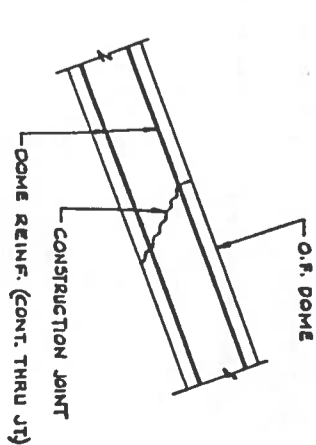
DOMES PENETRATION DETAIL



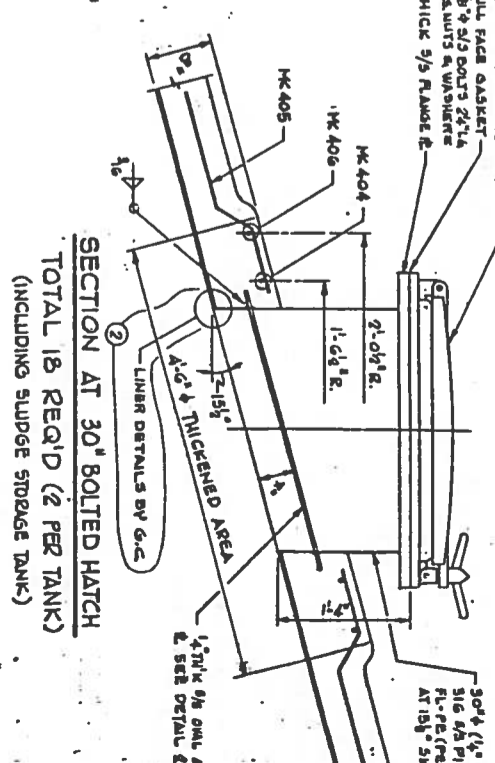
DETAIL 2 (15 REQ'D)



PLAN AT 30\"/>



DOMES CONSTRUCTION JOINT DETAIL
(ALL TANKS)



SECTION AT 30\"/>

ALUMINIUM SHALL CONFORM TO 6061-T6

- NOTES:**
- 1. ALL STAINLESS STEEL SHALL BE TYPE 316.
 - 2. ALL ROOF SLEEVES, HATCHES AND MANHOLES BY GEN. CONTR. EXCEPT FOR TANK WALKWAY CONNECTIONS.

16-1/2\"/>

16-1/2\"/>

16-1/2\"/>

16-1/2\"/>

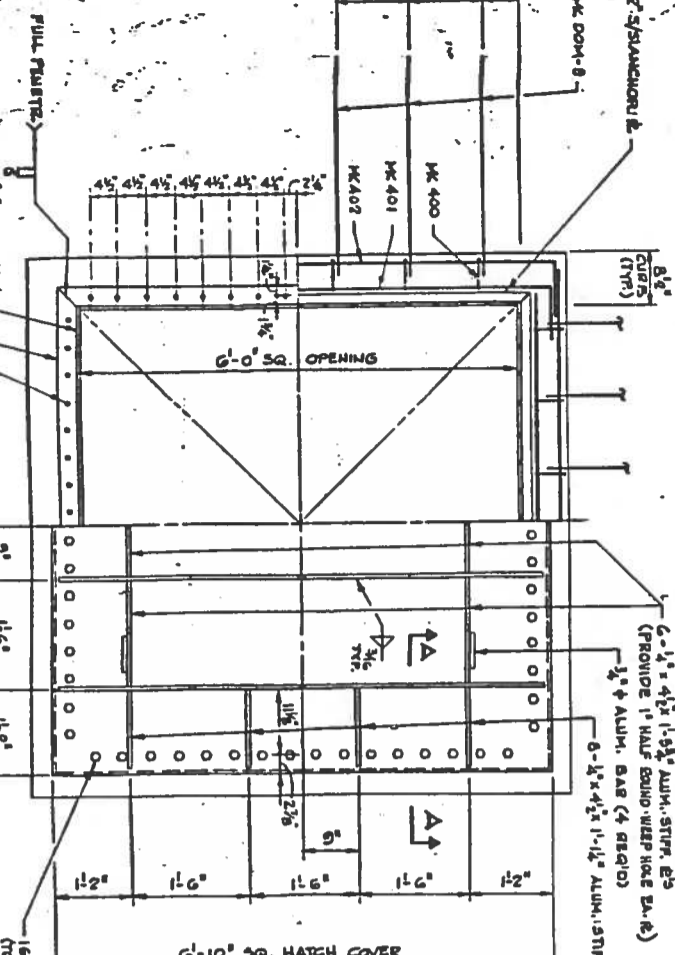
16-1/2\"/>

16-1/2\"/>

16-1/2\"/>

16-1/2\"/>

16-1/2\"/>



ACCESS HATCH PLAN (FOR DICESTER TANKS) (REQ'D BY GEN. CONTRACTOR)

16-1/2\"/>

16-1/2\"/>

16-1/2\"/>

16-1/2\"/>

16-1/2\"/>

16-1/2\"/>

16-1/2\"/>

16-1/2\"/>

16-1/2\"/>

16-1/2\"/>

16-1/2\"/>

16-1/2\"/>

16-1/2\"/>

16-1/2\"/>

16-1/2\"/>

16-1/2\"/>

16-1/2\"/>

16-1/2\"/>

16-1/2\"/>

16-1/2\"/>

16-1/2\"/>

16-1/2\"/>

16-1/2\"/>

16-1/2\"/>

16-1/2\"/>

16-1/2\"/>

16-1/2\"/>

16-1/2\"/>

16-1/2\"/>

16-1/2\"/>

16-1/2\"/>

16-1/2\"/>

16-1/2\"/>

16-1/2\"/>

16-1/2\"/>

16-1/2\"/>

16-1/2\"/>

16-1/2\"/>

16-1/2\"/>

16-1/2\"/>

16-1/2\"/>

16-1/2\"/>

16-1/2\"/>

16-1/2\"/>

16-1/2\"/>

16-1/2\"/>

16-1/2\"/>

16-1/2\"/>

16-1/2\"/>

16-1/2\"/>

16-1/2\"/>

16-1/2\"/>

16-1/2\"/>

16-1/2\"/>

16-1/2\"/>

16-1/2\"/>

16-1/2\"/>

16-1/2\"/>

16-1/2\"/>

16-1/2\"/>

16-1/2\"/>

16-1/2\"/>

16-1/2\"/>

16-1/2\"/>

16-1/2\"/>

16-1/2\"/>

16-1/2\"/>

16-1/2\"/>

16-1/2\"/>

16-1/2\"/>

16-1/2\"/>

16-1/2\"/>

16-1/2\"/>

16-1/2\"/>

16-1/2\"/>

16-1/2\"/>

16-1/2\"/>

16-1/2\"/>

16-1/2\"/>

16-1/2\"/>

16-1/2\"/>

16-1/2\"/>

16-1/2\"/>

16-1/2\"/>

16-1/2\"/>

16-1/2\"/>

16-1/2\"/>

16-1/2\"/>

16-1/2\"/>

16-1/2\"/>

16-1/2\"/>

16-1/2\"/>

16-1/2\"/>

16-1/2\"/>

16-1/2\"/>

16-1/2\"/>

16-1/2\"/>

16-1/2\"/>

16-1/2\"/>

16-1/2\"/>

16-1/2\"/>

16-1/2\"/>

16-1/2\"/>

16-1/2\"/>

16-1/2\"/>

16-1/2\"/>

16-1/2\"/>

16-1/2\"/>

16-1/2\"/>

16-1/2\"/>

16-1/2\"/>

16-1/2\"/>

16-1/2\"/>

16-1/2\"/>

16-1/2\"/>

16-1/2\"/>

16-1/2\"/>

16-1/2\"/>

16-1/2\"/>

16-1/2\"/>

16-1/2\"/>

16-1/2\"/>

16-1/2\"/>

16-1/2\"/>

16-1/2\"/>

16-1/2\"/>

16-1/2\"/>

16-1/2\"/>

16-1/2\"/>

16-1/2\"/>

16-1/2\"/>

16-1/2\"/>

16-1/2\"/>

16-1/2\"/>

16-1/2\"/>

16-1/2\"/>

16-1/2\"/>

16-1/2\"/>

16-1/2\"/>

16-1/2\"/>

16-1/2\"/>

16-1/2\"/>

16-1/2\"/>

16-1/2\"/>

16-1/2\"/>

16-1/2\"/>

16-1/2\"/>

16-1/2\"/>

16-1/2\"/>

16-1/2\"/>

16-1/2\"/>

16-1/2\"/>

16-1/2\"/>

16-1/2\"/>

16-1/2\"/>

16-1/2\"/>

16-1/2\"/>

16-1/2\"/>

16-1/2\"/>

16-1/2\"/>

16-1/2\"/>

16-1/2\"/>

16-1/2\"/>

16-1/2\"/>

16-1/2\"/>

16-1/2\"/>

16-1/2\"/>

16-1/2\"/>

16-1/2\"/>

16-1/2\"/>

16-1/2\"/>

16-1/2\"/>

16-1/2\"/>

16-1/2\"/>

16-1/2\"/>

16-1/2\"/>

16-1/2\"/>

16-1/2\"/>

16-1/2\"/>

16-1/2\"/>

16-1/2\"/>

16-1/2\"/>

16-1/2\"/>

16-1/2\"/>

16-1/2\"/>

16-1/2\"/>

16-1/2\"/>

16-1/2\"/>

16-1/2\"/>

16-1/2\"/>

16-1/2\"/>

16-1/2\"/>

16-1/2\"/>

16-1/2\"/>

16-1/2\"/>

16-1/2\"/>

16-1/2\"/>

16-1/2\"/>

16-1/2\"/>

16-1/2\"/>

16-1/2\"/>

16-1/2\"/>

16-1/2\"/>

16-1/2\"/>

16-1/2\"/>

16-1/2\"/>

16-1/2\"/>

16-1/2\"/>

16-1/2\"/>

16-1/2\"/>

16-1/2\"/>

16-1/2\"/>

16-1/2\"/>

16-1/2\"/>

16-1/2\"/>

16-1/2\"/>

16-1/2\"/>

16-1/2\"/>

16-1/2\"/>

16-1/2\"/>

16-1/2\"/>

16-1/2\"/>

16-1/2\"/>

16-1/2\"/>

16-1/2\"/>

16-1/2\"/>

16-1/2\"/>

16-1/2\"/>

16-1/2\"/>

16-1/2\"/>

16-1/2\"/>

16-1/2\"/>

16-1/2\"/>

16-1/2\"/>